

# ***DAMAC TOWER***

— NINE ELMS \ LONDON —

---

interior design by

**VERSACE**  
HOME



**TURYAP**<sup>®</sup>  
UK



# THE DISTINGUISHED *destination*



Computer Generated Images for illustrative purposes only.



Computer Generated Images for illustrative purposes only.

N I N E E L M S



D A M A C T O W E R

50 STOREYS OF UNPARALLELED  
LUXURY IN THE HEART OF LONDON.

PERFECTLY POSITIONED IN NINE ELMS.  
LONDON'S NEWEST PREMIER DESTINATION.

A COLLECTION OF STUDIO, 1, 2 & 3  
BEDROOM APARTMENTS & PENTHOUSES.

INTERIORS BY VERSACE HOME.  
EXTERIORS BY LONDON.

N I N E E L M S



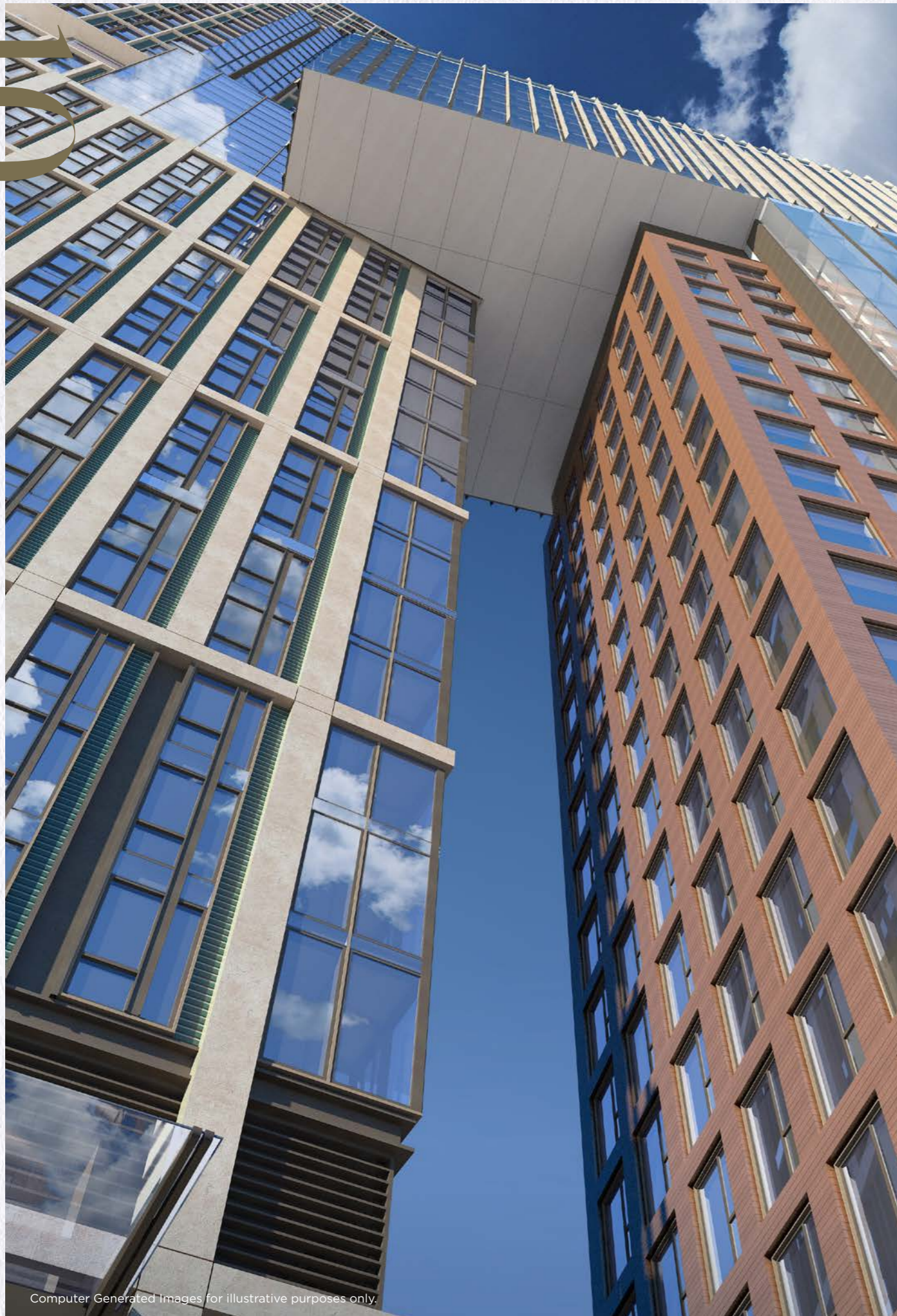
D A M A C T O W E R

# A NEW *perspective*

Soon to become the newest addition to London's skyline, DAMAC Tower stands proudly within Nine Elms. Carefully designed to create breathtaking vistas from every aspect, views cover the iconic Battersea Power Station, up the River Thames to the city and beyond.

N I N E E L M S

10



Computer Generated Images for illustrative purposes only.

D A M A C T O W E R

# A MODERN *masterpiece*

Stone, terracotta and glass come together in a fresh and distinctive world-class design to create an inspiration in luxury living, inside and out.

## THE NORTH TOWER BOASTS

360 new private residential apartments

8,010 square feet of communal gardens

Children's play areas

Expansive indoor swimming pool and jacuzzi

State-of-the-art gymnasium

Optional hospitality services\*

Ample parking\*

Secure bicycle spaces\*

Secure storage facilities\*

Two car lifts

\*Available by separate negotiation.

12

SETTLE *into* LUXURY

DAMAC TOWER

NINE ELMS

NINE ELMS



L  
N



D  
A  
M  
A  
C  
T  
O  
W  
E  
R

L	O
N	D
O	N

Enjoy the very best London has to offer. DAMAC Tower is perfectly placed to sample all delights, from designer labels to global premieres, Michelin-starred dining to once in a lifetime concerts. It's one of the greatest cities of Europe - make it your own.

N I N E E L M S



# ART *and* DESIGN

A metropolitan hub of art and culture, London's South Bank is home to some of the world's most famous arts venues.

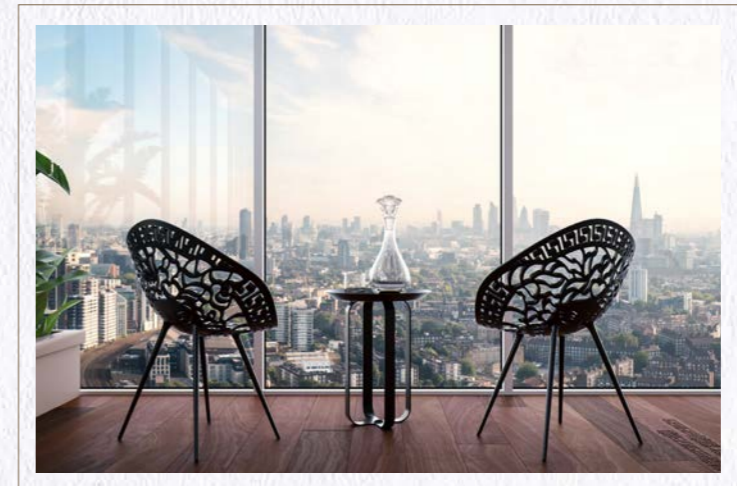
Drama takes centre stage at the National Theatre, Royal Festival Hall and the Old Vic, while art and sculpture impress at Tate Modern, Hayward Galleries and Saatchi Art Gallery just across the river in Chelsea.





Computer Generated Images for illustrative purposes only.

# THE *Designer* DETAILS



Artistic director, Donatella Versace, has considered every detail of DAMAC Tower Nine Elms London.

Fall in love with opulent interiors and exquisite finishes designed exclusively by Versace Home to create the ultimate branded living experience, from the use of Versace's iconic gold and vivid patterns to the seductive symbol of Medusa.

20

# THE *grand* LOBBY

D A M A C T O W E R



A peaceful ambience greets you when you enter the lobby at DAMAC Tower Nine Elms London. Beautifully polished details, from the high-gloss marble floor and plush Versace chairs,

to the friendly staff and fresh flowers; your entrance to the building perfectly sets the scene. The lobby is an elegant space that's bright on sunny days while being intimate and cosy during the winter months.

N I N E E L M S

N I N E E L M S

22

HEALTH  
*wellness*  
HAPPINESS



With ample space to relax and recharge, residents can enjoy access to a host of spa facilities, including a swimming pool and Jacuzzi on the 23rd floor, as well as a decking area with stunning views across the city.

The finishing touches have been carefully designed by Versace Home, ensuring luxury and originality.



TURYAP  
UK

Computer Generated Images for illustrative purposes only.



Computer Generated Images for illustrative purposes only.

# AT *the* MOVIES

Be swept away in the sumptuous comfort of your own private cinema, which gives an intimate viewing experience with Versace detailing underlined by plush glamour.

Computer Generated Images for illustrative purposes only.

for the  
LITTLE ONES



Computer generated images for illustrative purposes only.

Discover a dedicated 2,034 square-foot play area on the 24th floor crafted to keep children entertained and mentally stimulated with books, games and more, perfect for making new friends.

THE *resident's* LOUNGE

Computer generated images for illustrative purposes only.

Mingle with fellow residents in your shared lounge overlooking the roof gardens and the city beyond. Or simply sit back and relax with the papers on one of the luxurious Versace sofas.

30

# AN *elevated* EXPERIENCE

D A M A C T O W E R



Computer Generated Images for illustrative purposes only

Whether you're taking in the impressive cityscape from the three spacious terraces, soaking up the summer sun from the deck area or unwinding amidst the beautifully kept gardens, enjoy the south-facing terrace spaces in any way you like. Impress your guests with 360° views, suspended above the hustle and bustle of the city beneath and feel a world away with all the comfort of being at home.

N I N E E L M S

N I N E E L M S



32

# WORKOUT *with* A VIEW

D A M A C T O W E R



Computer Generated Images for illustrative purposes only.

Take some time to focus on you. With a state-of-the-art gym just moments from your door on the 24th floor, getting your daily dose of exercise couldn't be easier.

N I N E E L M S

N I N E E L M S



# A PARK *for all* SEASONS

A special space of serenity and a welcome escape from the busy capital, Battersea Park offers 200 acres of lush green space within walking distance of The Tower. Practice your serve on the tennis courts, set a new personal best on the running track or treat the little ones to a trip to the Children's Zoo. Host to the annual gardening Chelsea Fringe Festival and Formula E, the eco-friendly electric car racing championship, there is sure to be something for the whole family.



**TURYAP**  
UK

# TAILOR *made* FASHION

28  
*minutes*

## **KINGS ROAD**

Designer names and unique boutiques provide an eclectic shopping experience.

12  
*minutes*

## **SLOANE SQUARE**

A premiere shopping destination for luxury, fashion and accessories.

17  
*minutes*

## **OXFORD & REGENT ST.**

In the centre of London's West End, the street is famous for everything from designer brands to department stores like Selfridges and Nike Town.

09  
*minutes*

## **KNIGHTSBRIDGE**

Home to Harrods and Harvey Nichols the original exclusive luxury department stores.

17  
*minutes*

## **SOUTH KENSINGTON**

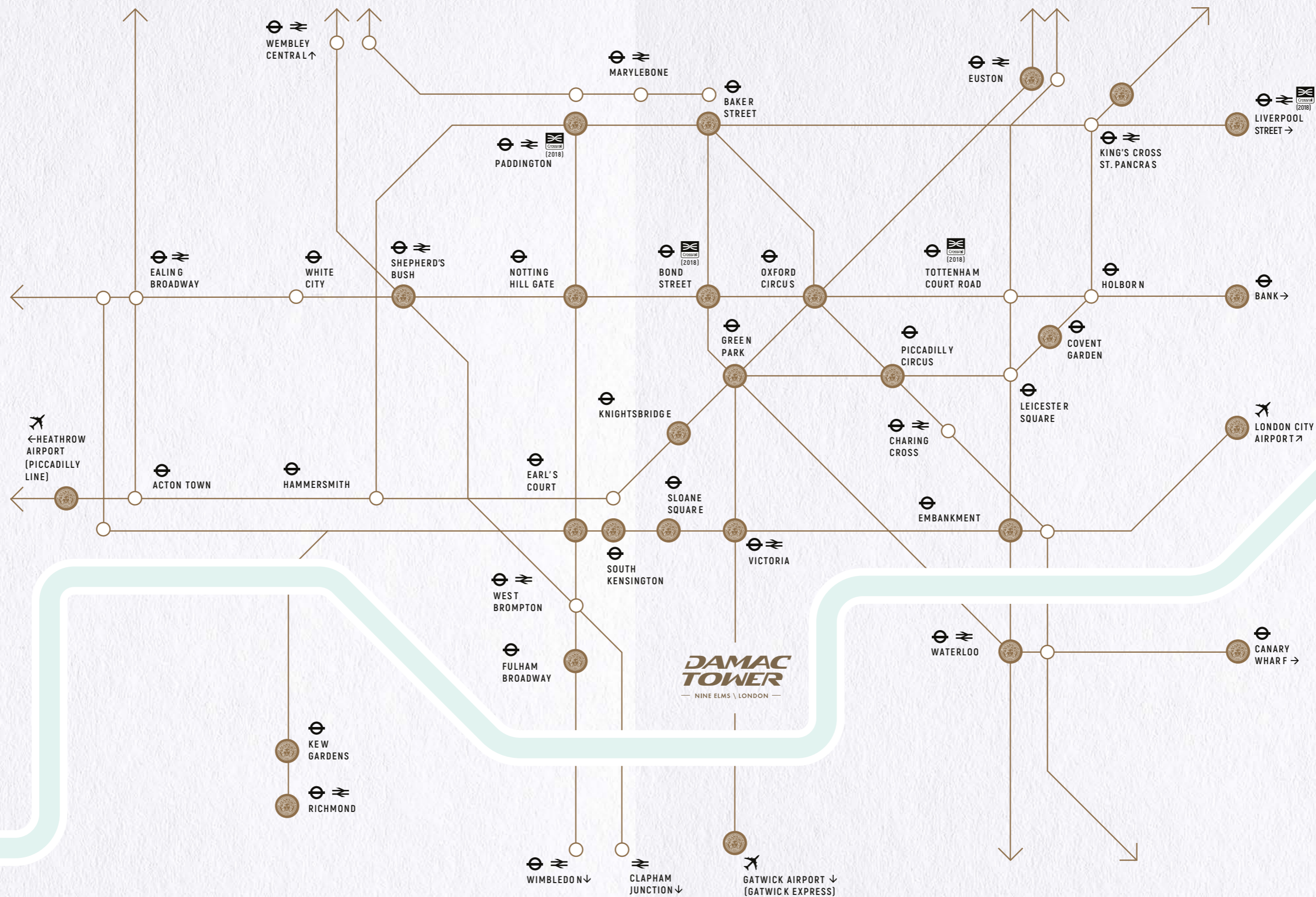
The heart of Kensington's cultural district featuring upscale dining opportunities and art galleries.

Travel times are calculated using Google Maps and are based on travelling via bus and/or underground, times may vary.



# EXPLORE *the* CAPITAL

38



D A M A C T O W E R

Your new home at The Tower is well connected and the city and West End are within easy reach via Vauxhall rail and underground station. If you are looking to go further ahead, nearby Queenstown Road and Battersea Park railway station offer connection to the rest of the UK via London Bridge and London Victoria.

Seeing more of the world is easier too and you can reach Gatwick Airport in less than an hour by train. With the new Northern Line extension soon to be introduced, travelling will become even easier, serving two new underground stations – Nine Elms and Battersea Power Station, enabling residents to reach the city in just eight minutes.



St James's Park

Houses of Parliament

London Eye

St Paul's Cathedral

The Gherkin

The Shard

12

# CAFE *with* CULTURE

D A M A C T O W E R



Computer Generated Images for illustrative purposes only.

N I N E E L M S

N I N E E L M S

11

D A M A C T O W E R



NEVER  
*need to*  
CHECKOUT

Our housekeeping team offer varying levels of service ranging from at-home dining to valet services and more, with discreet and thorough detail that easily fit into your schedule.

N I N E E L M S

N I N E E L M S

ALL IN *good* TASTE

**QUILON**

Pushing the traditions of South-west Indian cuisine, this Michelin starred restaurant creates a perfect blend of ethnic and progressive.

[quilon.co.uk](http://quilon.co.uk)

**THE LEDBURY**

Two starred Michelin restaurant in Notting Hill serving an innovative French menu using only the finest fresh ingredients.

[theledbury.com](http://theledbury.com)

**SKETCH LECTURE ROOM & LIBRARY**

Combining art and fine dining this two Michelin starred restaurant offers a unique and quirky dining experience, where you can enjoy a delectable cocktail and marvel at the décor.

[sketch.london](http://sketch.london)



**RESTAURANT GORDON RAMSAY**

Employing both classic and modern techniques, this Gordon Ramsay flagship restaurant holds three Michelin stars, serving elegant French cuisine using the finest seasonal ingredients.

[gordonramsayrestaurants.com](http://gordonramsayrestaurants.com)

**SCOTT'S**

Located in the heart of Mayfair, this is London's finest seafood restaurant, with a world class oyster and Champagne bar as well as some of the finest traditional fish and shellfish dishes.

[scotts-restaurant.com](http://scotts-restaurant.com)

Get spoilt for choice in culinary-rich London, with its many fine dining restaurants and a diverse selection of great eateries, all at your doorstep.



18



THE *finest* FINISH

50

**DAMAC**

**DAMAC Properties has been at the forefront of the Middle East's luxury real estate market since 2002, delivering residential, commercial and leisure properties across the region, including the UAE, Saudi Arabia, Qatar, Jordan, Lebanon, Oman and the United Kingdom.**

DAMAC Tower Nine Elms London is a project by Nine Elms Property Limited, a wholly owned subsidiary of DAMAC International Limited. DAMAC is one of the most established and trusted real estate companies in the Middle East. With 30,922 homes delivered and over 34,000 units at various stages of planning and progress, its credentials are impeccable. In addition, DAMAC's hospitality portfolio will extend to reach around 10,000 hotel rooms, serviced hotel apartments and serviced villas.\*

Luxury living, iconic design and the highest level of quality are the specialities of DAMAC. Known for its innovative products, the company has partnered with some of the most recognisable fashion and lifestyle brands in the world to bring new and exciting living concepts to the market. With vision and momentum, DAMAC is shaping the next generation of luxury living.

***DAMAC***



**TURKISH YAPILAR**<sup>UK</sup>